

Aluminum Frame of 55 mm

Necessary tools for assembling and installing

Supplied materials (included):

- 4 extrusions
- 4 connectors for corners
- Mounting bracket(s)
- 1 open-end wrench
- 1 fabric print

Other necessary tools (not included):

- Drill
- Screwdriver
- Screws adapted to your wall
- Plastic anchors (for gypsum wall)

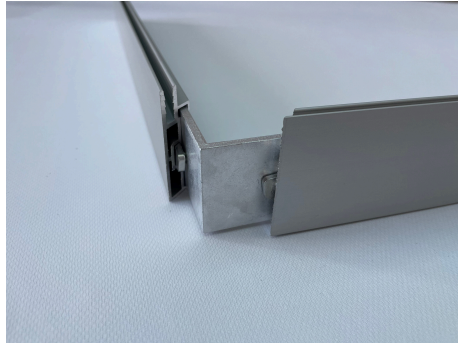


Assembly

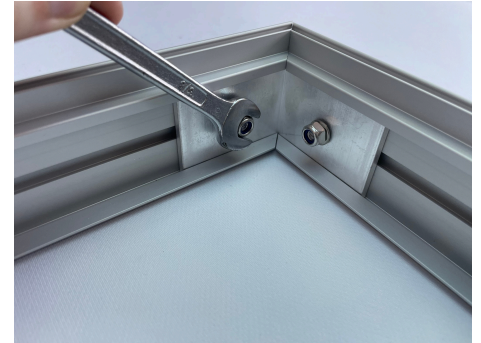
Assembling the frame:



1. Position flat on a table the four extrusions of the frame's sides in order to form the frame.



2. Insert one connectors at each corner, by sliding it into the groove of the extrusion.



3. Assemble all the frame, then securely screw each junction using the open-end wrench.

Installation

Installing the frame on the wall:



1. Place the frame against the wall. Position the bracket(s) evenly to ensure a well-distributed mounting system to support the weight and position of the frame securely onto the wall.



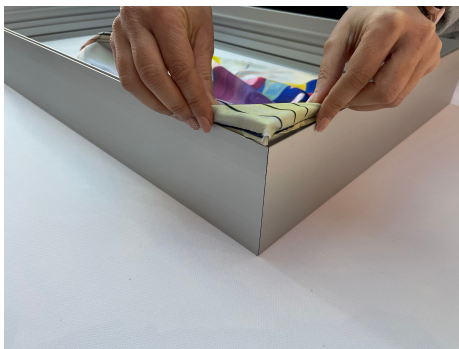
2. Attach the bracket(s) onto the wall by fastening the screws adapted to your wall. For a gypsum wall, we suggest to use plastic anchors before fastening the screws to secure the frame to the wall.



3. Hang the frame on the bracket(s). Make sure that the bracket(s) slide(s) into the slot of the frame.

Fabric Print

Mounting the fabric print in the frame:



1. Take one corner of the fabric print and insert the silicone edge trim into the slot of the frame. Put this way each corner of the fabric print in the frame.



2. Push in the central part of the silicone edge trim on each of the four sides.



3. Finish by smoothing the perimeter of the fabric print so that the silicone is pressed evenly all over.

Note: To remove the fabric print, pull on the label for it to easily come off the frame.